

Boating and Fishing

Fort Pillow Lake/Sullivan's Pond [25-acres] features bank and boat fishing for bass, bream, crappie, and catfish. Fish length and creel limits are available in the TWRA fishing guide. A small fishing pier is located on the lake. A free boat launch ramp is on the lake and private boats are welcome. The park rents canoes and kayaks for use on the lake.



Planned Programs

Most of the interpretive programs at the park are developed to enhance the understanding of the American Civil War as it relates to the occupation of both Confederate and Union forces at Fort Pillow. Nature, recreational and Civil War programs are held every weekend and holiday during the summer.

Gift Shop

The gift shop offers books, t-shirts, caps and a variety of other souvenirs and gifts relating to the Civil War period.

Nearby Attractions

- Alex Haley Museum, Henning - 21 miles

Annual Park Events

- Civil War Living History - April



We're Mobile!

The Tennessee State Parks Pocket Ranger app provides users access to all Tennessee State Parks, historic sites and campgrounds with detailed information, amenities, facility maps and directions. Visitors can plan a trip by searching for a park by GPS location or activity including hiking, camping, boating, birding and more. Once in the park, GPS and GIS mapping technology will allow you to track and record trails, mark waypoints, locate your friends within the parks and enjoy GeoChallenge activities and games. The app is available at the Apple app store and Google play.



Directions

Turn west off of I-40, Exit 66 onto US 70. In Brownsville, turn right on State Highway 19. Follow Highway 19 into Ripley to State Highway 51. Turn South on Hwy. 51 to Henning, turn west onto Highway 87. Turn right on State Highway 207 East onto Park Road.



Tennessee Department of Environment and Conservation authorization no. 327152, 20,000 copies. This public document was promulgated at a cost of \$.05 per copy, August 2017.

The Tennessee Department of Environment and Conservation is committed to principles of equal opportunity, equal access and affirmative action. Contact the Tennessee Department of Environment and Conservation EEO/AA coordinator at 888-867-2757 or the ADA Coordinator at 615-532-0059 for further information. Hearing impaired callers may use the Tennessee Relay Service at 800-848-0298.

Hours of Operation

8 AM CT until Sunset
8:00 AM to 4:00 PM Museum [7 days a week]
Closed Thanksgiving, Christmas Eve
and Christmas Day
8 AM to 4:30 PM Park Office
Monday through Friday

Fort Pillow State Historic Park

3122 Park Road
Henning, TN 38041
731-738-5581

Tennessee State Parks

William Snodgrass Building TN Tower
312 Rosa L. Parks Avenue, 2nd Floor
Nashville, TN 37243
888-867-2757

www.tnstateparks.com

Volunteer Opportunities

Volunteers and Friends assist in protecting, preserving and promoting the cultural and natural resources of their favorite state park, giving of their time and talents to ensure their park's integrity for future generations to enjoy. It's easy to show your support - join a Friends group or participate in one of the many volunteer opportunities we offer individuals, families and groups. To learn more about volunteer opportunities in your area visit www.tnstateparks.com.



T E N N E S S E E
State Parks

FORT PILLOW
STATE PARK
TENNESSEE



www.tnstateparks.com



Fort Pillow State Historic Park is located on the western edge of Tennessee approximately 40 miles north of Memphis. Steep bluffs overlooking the Mississippi River made this area a strategic location during the Civil War. The fort was originally built by Confederate troops in 1861 and named after General Gideon J. Pillow of Maury County. It was abandoned in 1862 due to the Union Navy's advancement along the Mississippi River. The 1,642 acre Fort Pillow is known for its well-preserved breastworks and reconstructed inner fort. The area became a state park in 1971. Fort Pillow State Historic Park is designated as a Wildlife Observation Area by the Tennessee Wildlife Resources Agency and is frequented by bird watchers.



Camping

The campground has 30 sites, six of which will accommodate RV and camper trailers with 20/30/50 amp service. Fifteen sites have 20 amp service and water stations in close proximity to each site. Primitive campers have their choice of nine different sites without electricity, but all have water in close proximity to each site. Each campsite has a grill/campfire pad, picnic table, lantern holder, and pea gravel for tent set-up. The area consists of a roomy forest setting and two full-service bathhouses that are ADA accessible,



The campground is trashcan free, and has a dump station with dumpster, recycling and a spot for gray and black water. The dump station and dumpster are conveniently located at the entrance to the campground.

There is a designated back country site located one mile in, on the Blue Chickasaw Bluff Trail. A permit is required and can be obtained at the park office/museum. The trail to backcountry camping is hilly and moderately difficult. Total trail is four miles.

Group Camping

The group camp area can accommodate up to 200 campers and is available for organized groups such as scout troops and church organizations. The site may be reserved through the park office.

Picnic Pavilions and Playgrounds

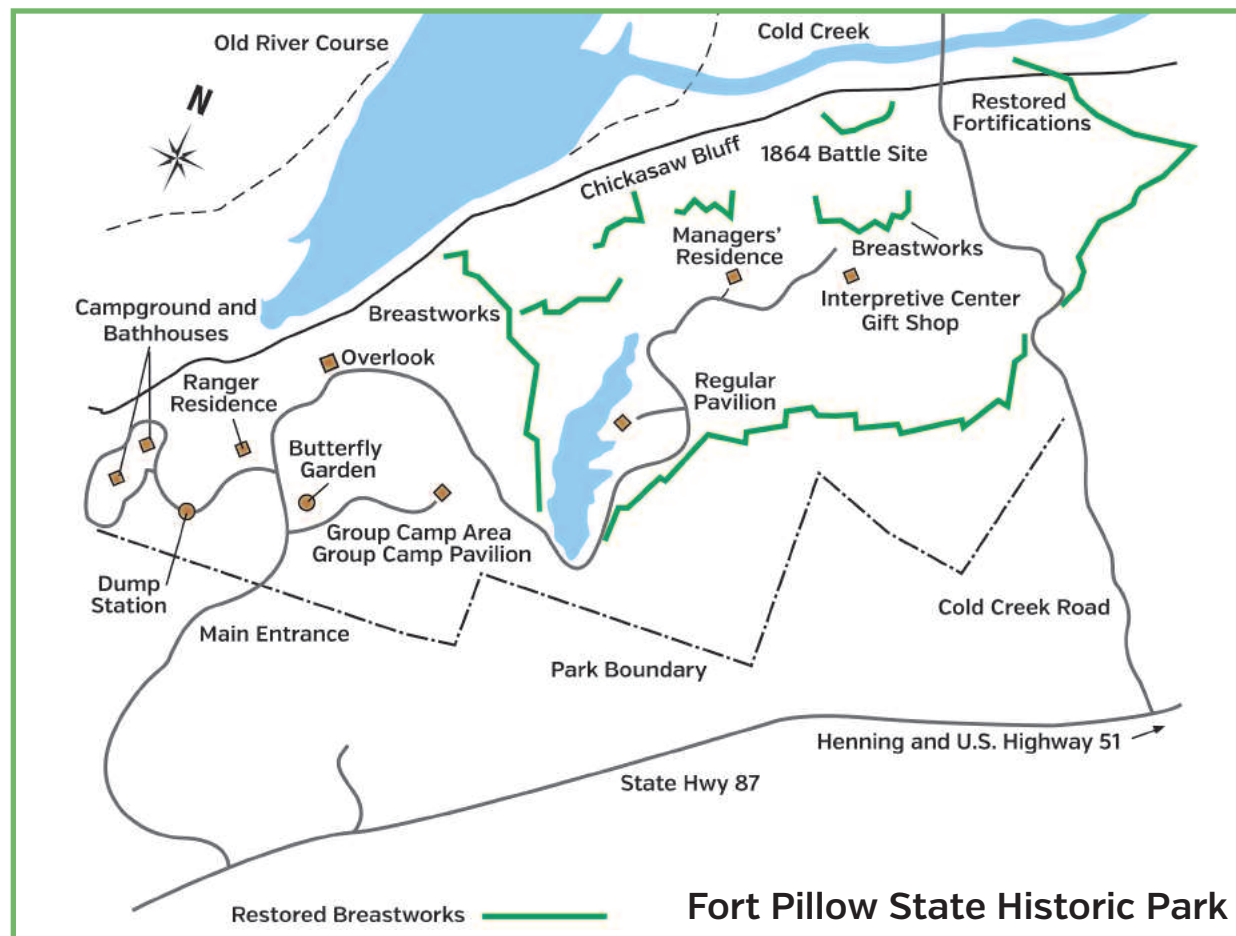
A picnic area overlooking Fort Pillow Lake provides visitors with tables and grills. There is one centrally located picnic pavilion that may be reserved and is ideal for family reunions. Water, restrooms and a playground are nearby.

Museum

The interpretive center and museum offers displays of Civil War artifacts and interpretive displays relating to the history of Fort Pillow. There is a 19 minute video on the 1864 Battle shown by request, as well as tours of the museum and restored fortifications. The museum is open daily from 8 a.m. to 4 p.m. central time. Maps, camping permits, and other informative brochures are available.

Hiking

There are 20 miles of hiking trails, many of those miles paralleling the earthwork fortifications at the site. Trail maps are available at the park office.



Fort Pillow State Historic Park