

Montgomery Bell State Park

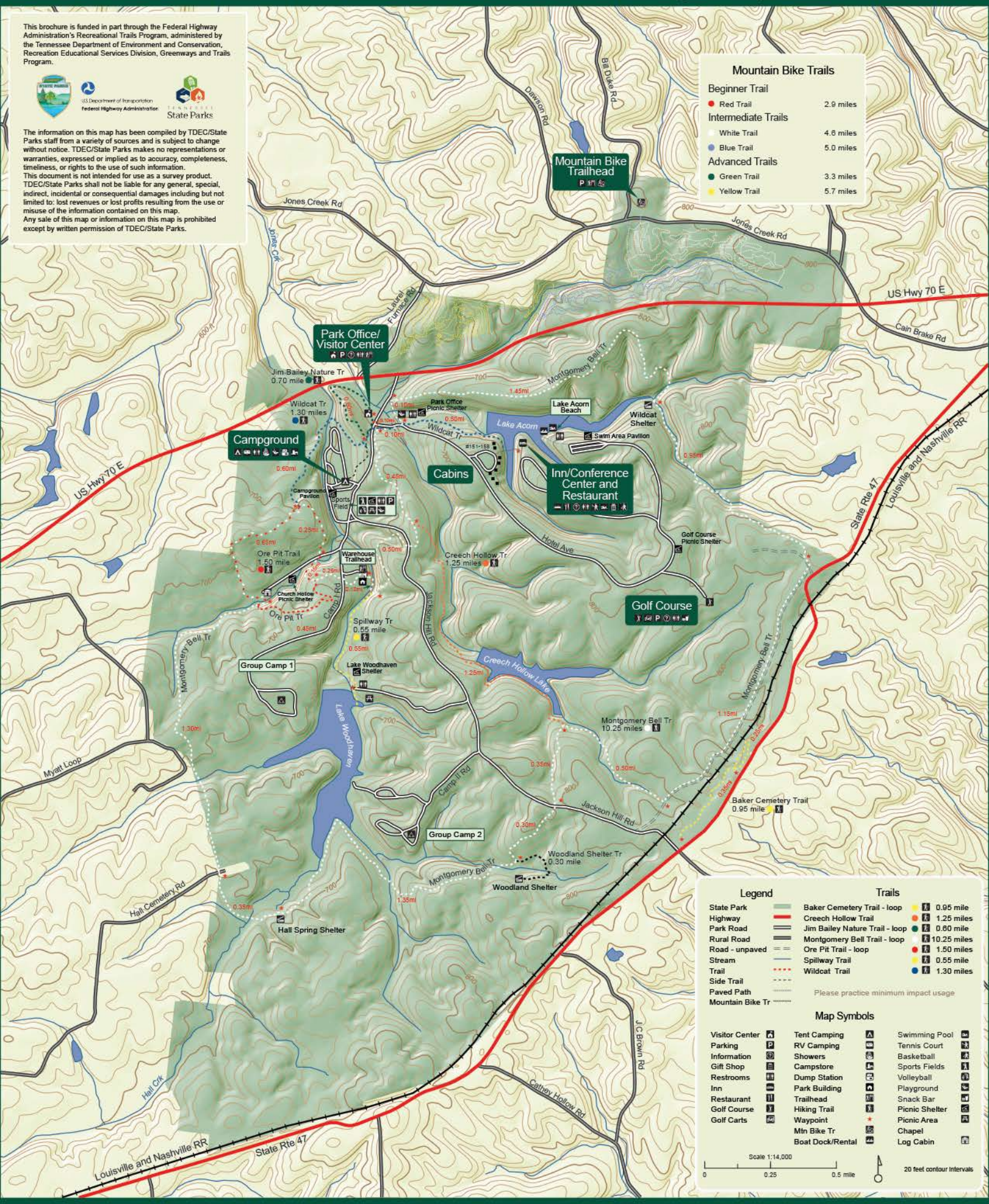
This brochure is funded in part through the Federal Highway Administration's Recreational Trails Program, administered by the Tennessee Department of Environment and Conservation, Recreation Educational Services Division, Greenways and Trails Program.



The information on this map has been compiled by TDEC/State Parks staff from a variety of sources and is subject to change without notice. TDEC/State Parks makes no representations or warranties, expressed or implied as to accuracy, completeness, timeliness, or rights to the use of such information. This document is not intended for use as a survey product. TDEC/State Parks shall not be liable for any general, special, indirect, incidental or consequential damages including but not limited to: lost revenues or lost profits resulting from the use or misuse of the information contained on this map. Any sale of this map or information on this map is prohibited except by written permission of TDEC/State Parks.

Mountain Bike Trails

| | |
|---------------------|-----------|
| Beginner Trail | 2.9 miles |
| Intermediate Trails | 4.6 miles |
| Advanced Trails | 5.7 miles |
| Red Trail | 2.9 miles |
| White Trail | 4.6 miles |
| Blue Trail | 5.0 miles |
| Green Trail | 3.3 miles |
| Yellow Trail | 5.7 miles |



Legend

| | | | | |
|------------------|---------------------------|--------------------------------|-------------------|-------------|
| State Park | Green shaded area | Baker Cemetery Trail - loop | Yellow trail icon | 0.95 mile |
| Highway | Thick red line | Creech Hollow Trail | Red trail icon | 1.25 miles |
| Park Road | Thin red line | Jim Bailey Nature Trail - loop | Blue trail icon | 0.80 mile |
| Rural Road | Thin black line | Montgomery Bell Trail - loop | White trail icon | 10.25 miles |
| Road - unpaved | Dashed black line | Ore Pit Trail - loop | Green trail icon | 1.50 miles |
| Stream | Blue line | Spillway Trail | Yellow trail icon | 0.55 mile |
| Trail | Dotted line | Wildcat Trail | Blue trail icon | 1.30 miles |
| Side Trail | Dashed line | | | |
| Paved Path | Solid black line | | | |
| Mountain Bike Tr | Dotted line with red dots | | | |

Please practice minimum impact usage

Map Symbols

| | | | | | |
|----------------|------|------------------|------|----------------|------|
| Visitor Center | Icon | Tent Camping | Icon | Swimming Pool | Icon |
| Parking | Icon | RV Camping | Icon | Tennis Court | Icon |
| Information | Icon | Showers | Icon | Basketball | Icon |
| Gift Shop | Icon | Campstore | Icon | Sports Fields | Icon |
| Restrooms | Icon | Dump Station | Icon | Volleyball | Icon |
| Inn | Icon | Park Building | Icon | Playground | Icon |
| Restaurant | Icon | Trailhead | Icon | Snack Bar | Icon |
| Golf Course | Icon | Hiking Trail | Icon | Picnic Shelter | Icon |
| Golf Carts | Icon | Waypoint | Icon | Picnic Area | Icon |
| | | Mtn Bike Tr | Icon | Chapel | Icon |
| | | Boat Dock/Rental | Icon | Log Cabin | Icon |

Scale 1:14,000
0 0.25 0.5 mile
20 feet contour intervals