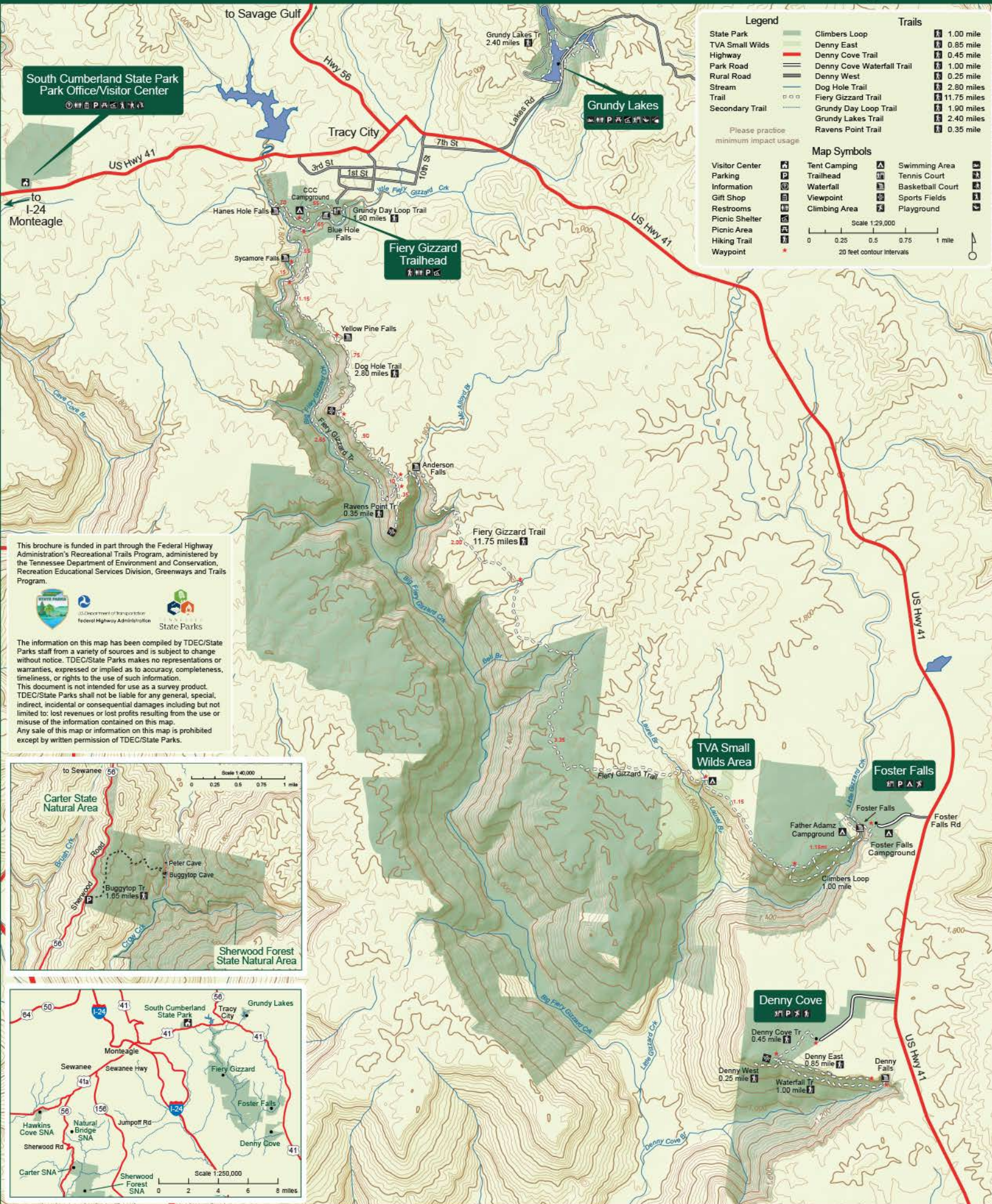


South Cumberland State Park - Fiery Gizzard



South Cumberland State Park
Park Office/Visitor Center

Grundy Lakes

Fiery Gizzard Trailhead

Legend

- | | | | |
|-----------------|-------------------------|----------------------------|-------------|
| State Park | Green shaded area | Climbers Loop | 1.00 mile |
| TVA Small Wilds | Light green shaded area | Denny East | 0.85 mile |
| Highway | Red line | Denny Cove Trail | 0.45 mile |
| Park Road | Black line | Denny Cove Waterfall Trail | 1.00 mile |
| Rural Road | Grey line | Denny West | 0.25 mile |
| Stream | Blue line | Dog Hole Trail | 2.80 miles |
| Trail | Black line with dots | Fiery Gizzard Trail | 11.75 miles |
| Secondary Trail | Grey line with dots | Grundy Day Loop Trail | 1.90 miles |
| | | Grundy Lakes Trail | 2.40 miles |
| | | Ravens Point Trail | 0.35 mile |

Please practice minimum impact usage

Map Symbols

- | | | | | | |
|----------------|------|---------------|------|------------------|------|
| Visitor Center | Icon | Tent Camping | Icon | Swimming Area | Icon |
| Parking | Icon | Trailhead | Icon | Tennis Court | Icon |
| Information | Icon | Waterfall | Icon | Basketball Court | Icon |
| Gift Shop | Icon | Viewpoint | Icon | Sports Fields | Icon |
| Restrooms | Icon | Climbing Area | Icon | Playground | Icon |
| Picnic Shelter | Icon | | | | |
| Picnic Area | Icon | | | | |
| Hiking Trail | Icon | | | | |
| Waypoint | Icon | | | | |

Scale 1:29,000



This brochure is funded in part through the Federal Highway Administration's Recreational Trails Program, administered by the Tennessee Department of Environment and Conservation, Recreation Educational Services Division, Greenways and Trails Program.



The information on this map has been compiled by TDEC/State Parks staff from a variety of sources and is subject to change without notice. TDEC/State Parks makes no representations or warranties, expressed or implied as to accuracy, completeness, timeliness, or rights to the use of such information. This document is not intended for use as a survey product. TDEC/State Parks shall not be liable for any general, special, indirect, incidental or consequential damages including but not limited to: lost revenues or lost profits resulting from the use or misuse of the information contained on this map. Any sale of this map or information on this map is prohibited except by written permission of TDEC/State Parks.

